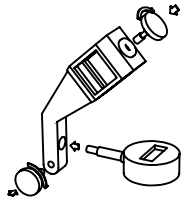
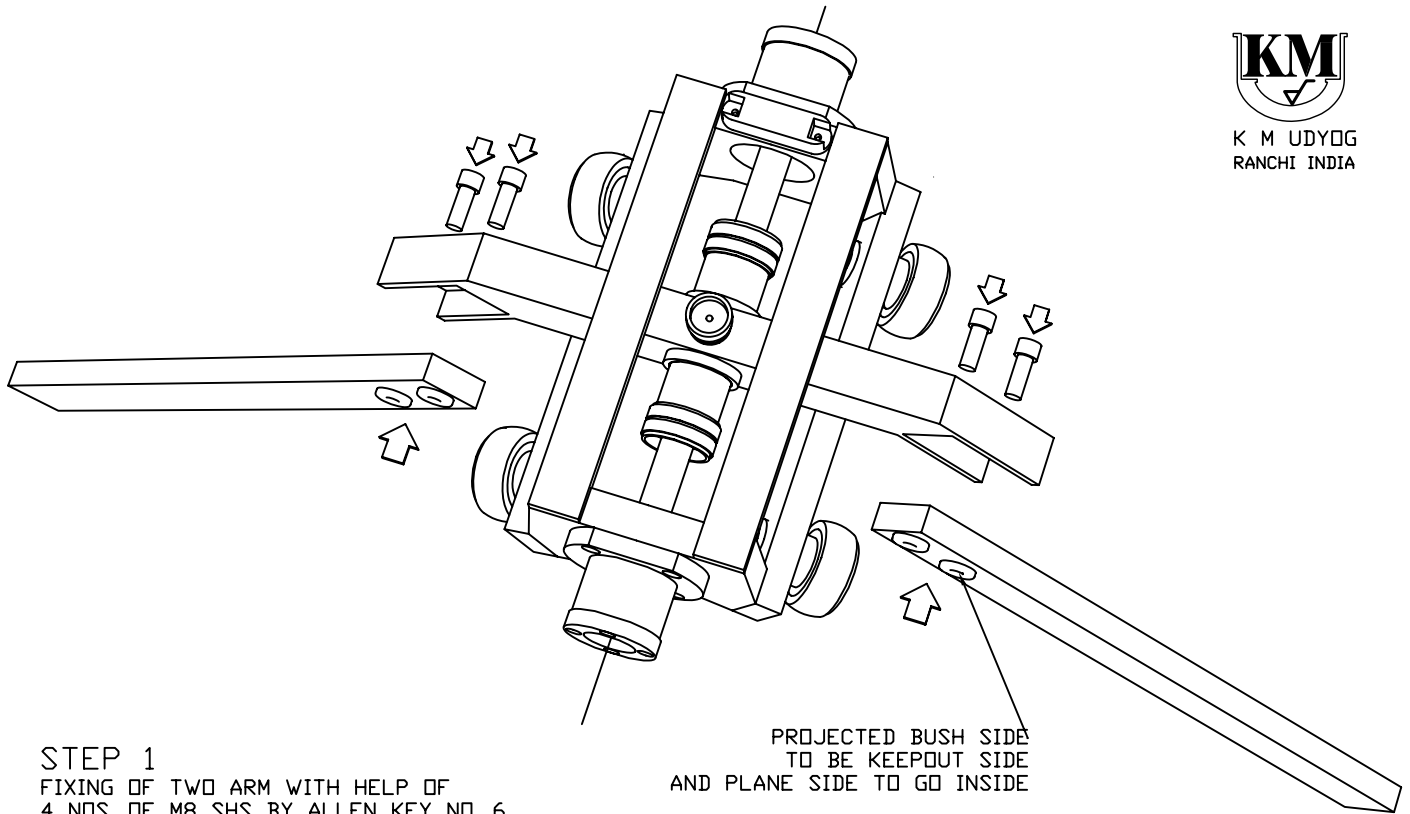
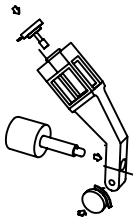


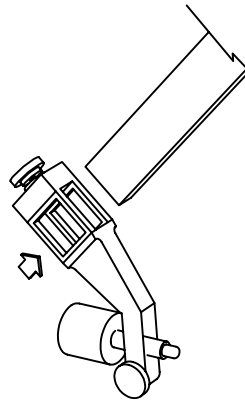
# ASSEMBLY OF PROFILOMETER



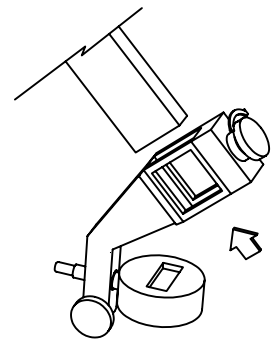
STEP 2  
FIXING OF DIGIMATIC INDICATOR  
WITH HELP OF THUMB SCREW



STEP 3  
FIXING OF REFERENCE SCREW  
WITH HELP OF THUMB SCREW



STEP 4  
FIXING OF BRACKET WITH HELP OF  
THUMB SCREW ON ARM SCALE INDICATE  
DIAMETER OF ROLL



STEP 5  
FIXING OF BRACKET WITH HELP OF  
THUMB SCREW ON ARM SCALE INDICATE  
DIAMETER OF ROLL

